



**Floriana Estate**  
Pappalino Street, Bonshaw  
Lot 239

**Facade:** Havana (with Eaves) **House:** 20.39 sq **Land:** 400 m2

4 2 2 2

## Spice 20

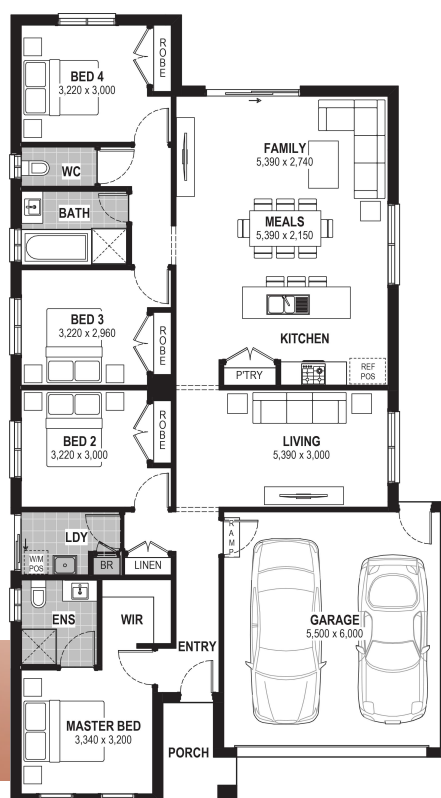
### Inclusions

- Truecore Steel House Frame
- Colorbond Steel Roof (with Sarking)
- High Performance (uPVC) Double Glazed Safety Glass Windows & Doors
- 7 Star Energy Efficient to all orientations
- 7 x 440w Panels & 3KW Inverter (single phase)
- Bushfire Compliance to BAL 12.5
- 50 Year Structural Guarantee
- NCC Compliant
- Range of stylish colour schemes
- Overhead Cabinetry to Kitchen
- Tiled Shower Bases
- Laundry Cabinetry
- Remote Garage Door with Openers
- Site Costs Allowance Included
- Developer Guidelines Included
- Caesarstone Benchtops to Kitchen & Vanities
- 2550mm Ceiling Height
- Laminate Flooring & Carpet Throughout
- Rear Alfresco (design specific)

### Contact:

Joel Hofstra  
0460 305 225  
joelhofstra@jgkinghomes.com.au

**FLORIANA**  
BONSHAW



\*Conditions apply. Speak to your New Home Advisor for further details