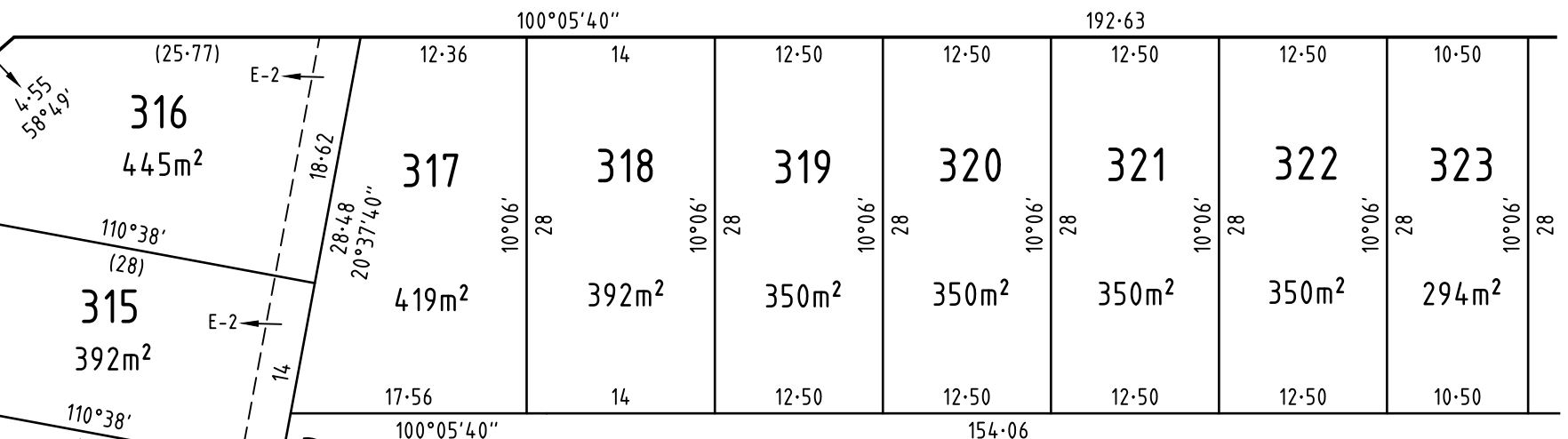
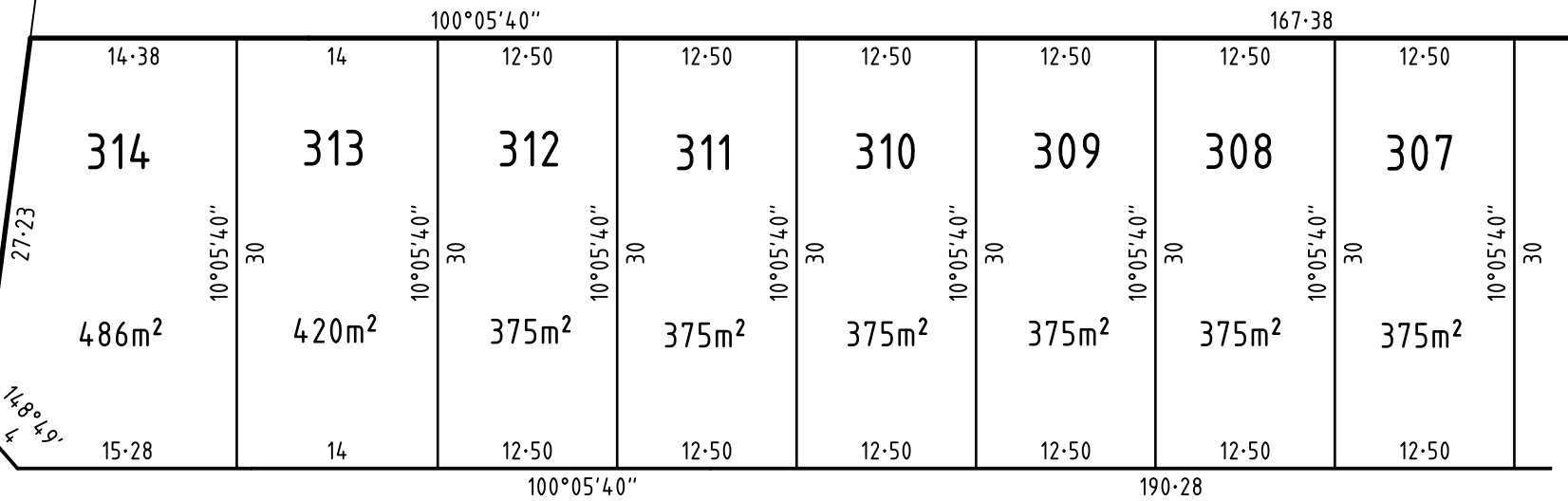


WEBB ROAD

ZAYNUDIN ROAD R-1 STREET
3574m²

SEE SHEET 4

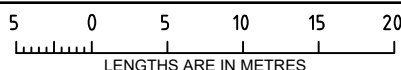


D

SEE SHEET 2

SURVEYOR'S FILE REF: 310901SV01

SCALE
1: 500



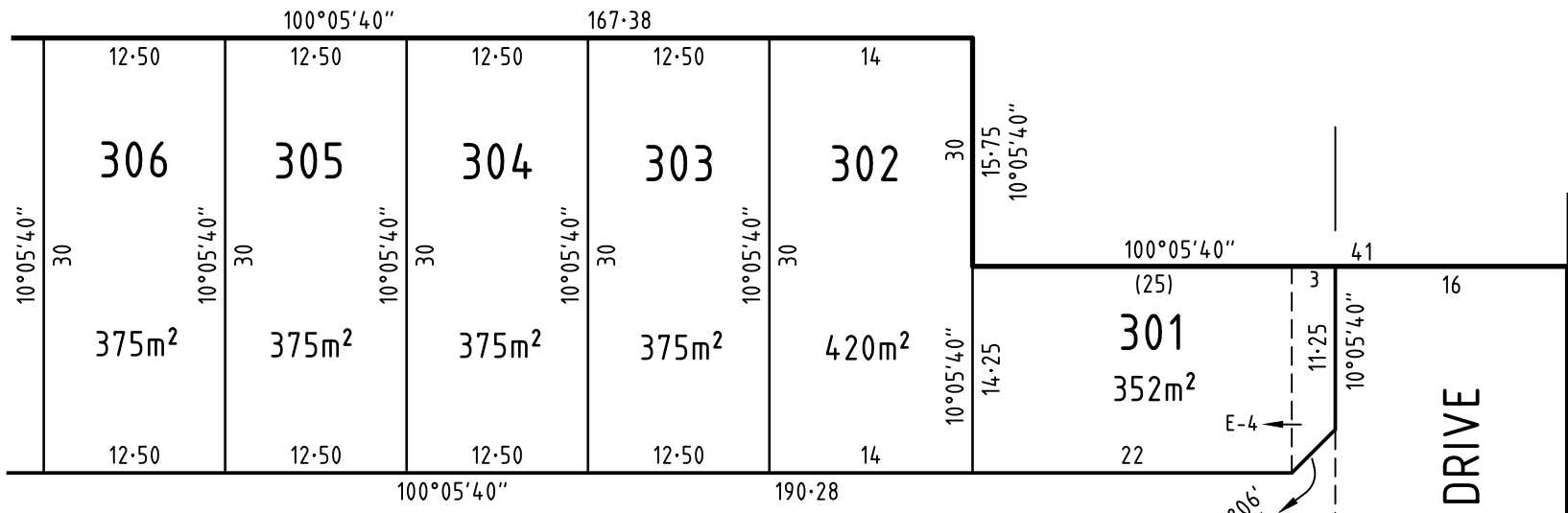
ORIGINAL SHEET
SIZE: A3

SHEET 3



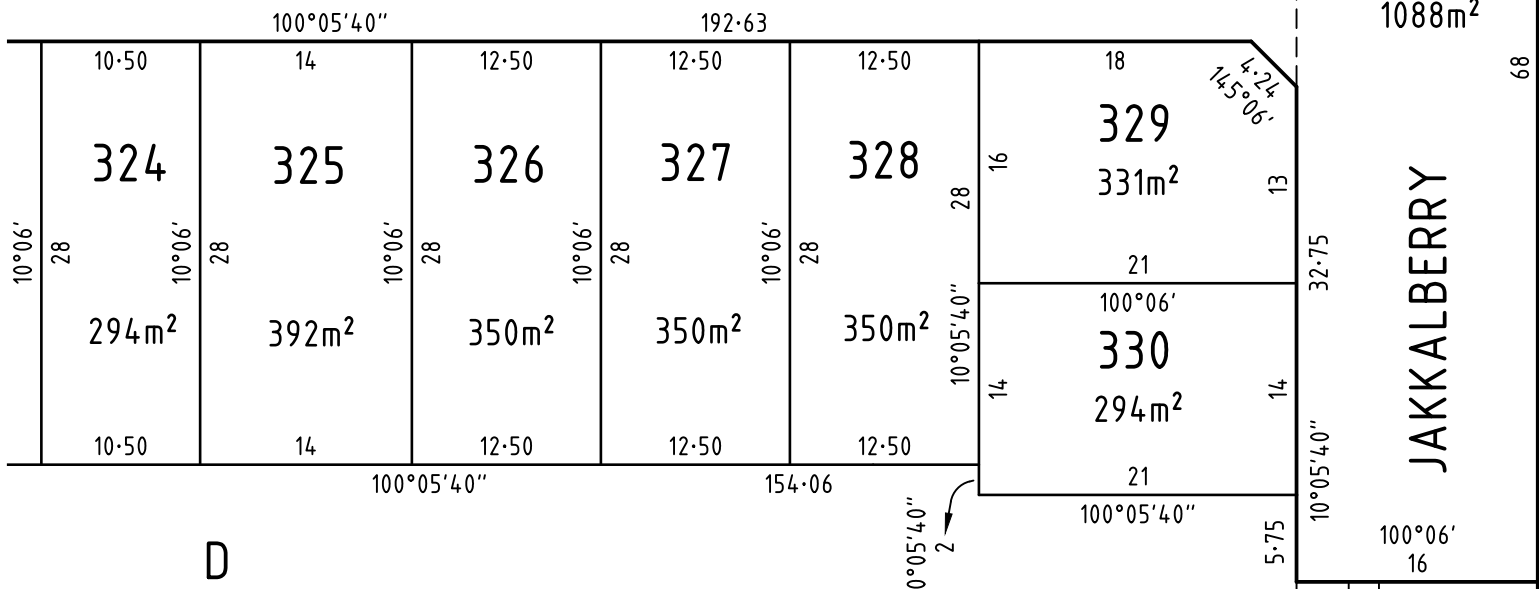
115 Doveton Street South
PO Box 668
Ballarat Central Vic 3353
T 61 3 5312 7000
spiire.com.au

Licensed Surveyor: Lyall Murray Timms
Version: 1



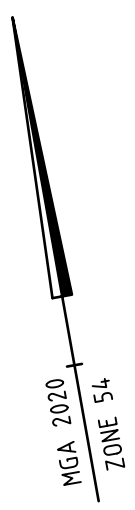
ZAYNUDIN ROAD R-1 STREET

ROAD R-1



D

JAKKALBERRY DRIVE



SEE SHEET 3

SEE SHEET 2